

## Structure of the EU Research Framework Programme Horizon 2020

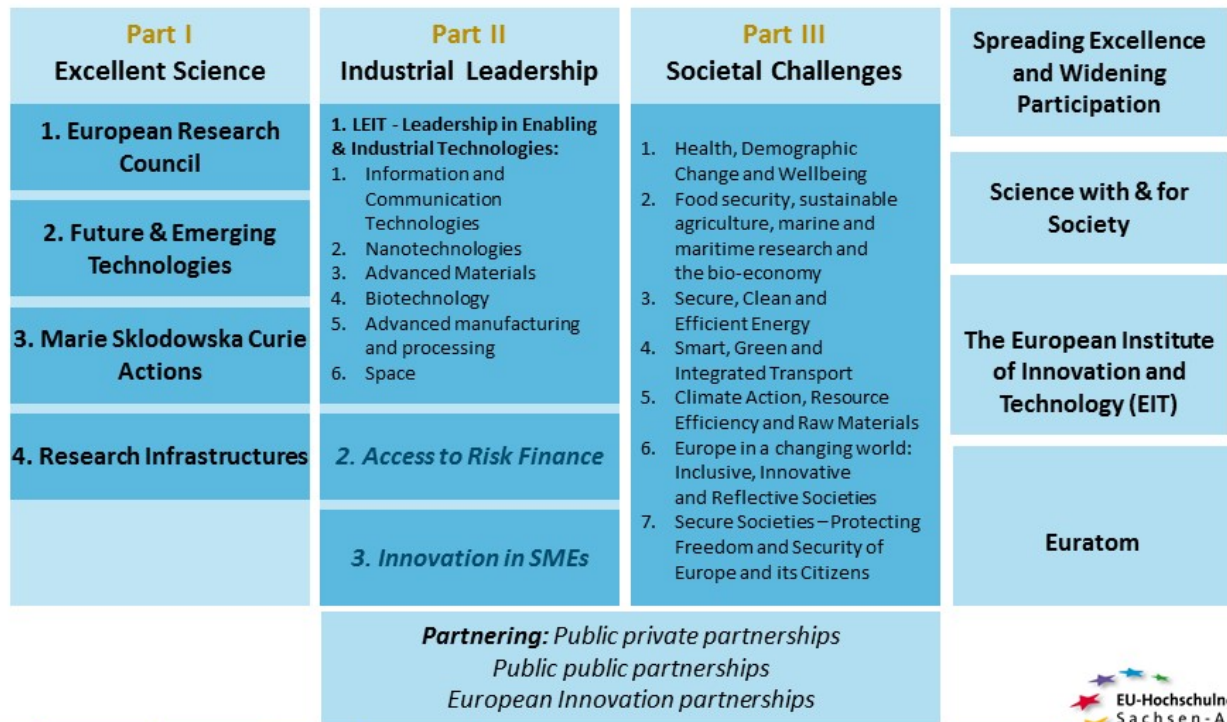
Horizon 2020 is divided into three pillars, which also reflect the priorities of the Research Framework Programme:

- ▶ Part I promotes excellent science in Europe and supports, among other things, the best minds in Europe in all phases of their scientific careers. The objectives of this priority are, for example, better networking of researchers and facilitating research stays in other countries.
- ▶ The second priority area is specifically aimed at industrial research. Industry and especially small and medium-sized enterprises (SMEs) are important drivers of innovation and competitiveness. They are supported and networked here. The aim of this priority is to expand the leading role of European industries.
- ▶ The third part deals with major challenges facing society, such as demographic change or a clean, affordable energy supply. Through Horizon 2020, researchers in the EU and the world are working more closely together on solutions for seven thematically defined challenges.

› Transnational Research & Development collaboration (<https://www.era-learn.eu/>) (ERA-Net, Joint Calls, Public-Public-Partnerships (P2P))



# HORIZON 2020 – the Framework Programme for Research and Innovation (2014-2020)



## Proposal Evaluation

- Become an evaluator!

Contact:

### EU-Office North

Martina Hagen, OVGU  
+49 391 67 58505 | > E-Mail

Veronika Kauert, OVGU Project Management  
+49 391 67 52114 | > E-Mail

Niko Isermann, HS Harz University of Applied Sciences,  
Magdeburg-Stendal University of Applied Sciences,  
University of Applied Police Sciences Saxony-Anhalt:  
+49 391 67 50863 | > E-Mail

N.N., Cooperation with SMEs  
+49 391 67 57593 |

### EU-Office South

Dr. Sigrid Köhne, MLU  
+49 345 55 21303 | > E-Mail

Sarah Blaschke (part-time), MLU Project Management

+49 345 55 21652 / > E-Mail

Claudia Weinhold-Kiefhaber, *MLU Project Management*

+49 345 55 21355 / > E-Mail

NN., *HS Anhalt University of Applied Sciences,  
HoMe Merseburg University of Applied Sciences,  
Kunsthochschule Burg Giebichenstein University of Art  
and Design*

+49 345 55 22104 | > E-Mail

N.N., *Cooperation with SME*

+49 345 55 21389 |

> More about us ...

## PROJECT MANAGEMENT

We are happy to advice and support you.

### Links to Horizon 2020

> BMBF (German Federal Ministry of Education and Research)

> KoWi (European Liaison Office of the German Research Organisations)

> European Commission

> Official Presentations

### International Partners

> EU Guidance Note: "International Cooperation and association" (Horizon Europe Programme Guide, p. 11ff.)