

Marie Curie-Actions

How to write a successful Marie Curie proposal

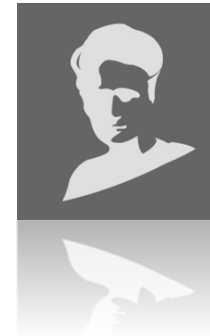
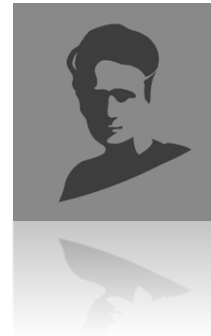
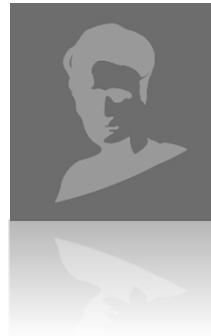


Vera Küpper

Content

- General Considerations and First Steps
- Proposal Writing (IEF)
- Project Planning
- Research Stays Abroad
- Further Career Planning
- EURAXESS
- Further Information & Contacts

General Considerations and First Steps



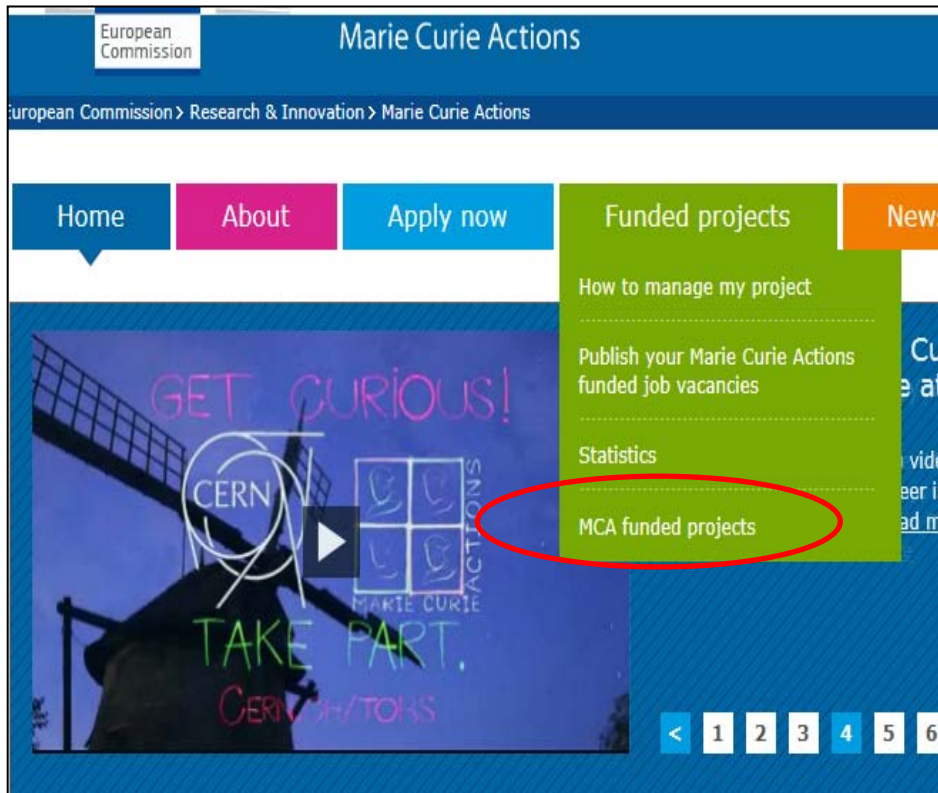
General Considerations (I)

- Define your scientific and career aims
- Search for an excellent host institution/supervisor
- Choose the right funding instrument
- Is your project competitive?
- Have a realistic timetable!

General Considerations (II)

- Find out what is specifically supported with the grant (>funding philosophy< and objectives of the funding agency)
- Get to know the formal requirements
- Get to know the specific evaluation system
- Use the experience of successful applicants
 - EU-office at your institution
 - Cordis: "Find a project"

Competitiveness of your proposal



The screenshot shows the Marie Curie Actions website interface. The top navigation bar includes 'Home', 'About', 'Apply now', 'Funded projects', and 'News'. The 'Funded projects' menu is expanded, showing options: 'How to manage my project', 'Publish your Marie Curie Actions funded job vacancies', 'Statistics', and 'MCA funded projects'. The 'MCA funded projects' option is circled in red. The main content area features a video player with a play button and a carousel of project images. The video player has a play button and a progress bar. The carousel shows a video player with a play button and a progress bar. The video player has a play button and a progress bar.

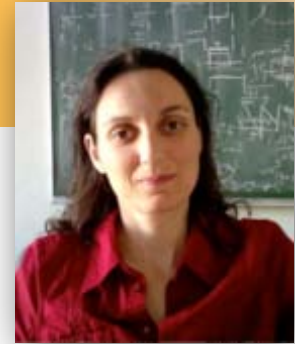
- Search for funded projects:
- EU-database „Find a project“ at CORDIS

<http://ec.europa.eu/research/mariecurieactions/>

And: Colleagues,
PhD supervisor

Application

- Calls for proposals with a specific deadline (each year)
<http://ec.europa.eu/research/participants/portal/page/funding>
- Proposals are submitted by the researchers in conjunction with the **host organisation**
 - University
 - Research center
 - Industry (e.g. SME)
 - International European Interest Organisations (e.g. CERN, EMBL)
 - Joint Research Centre of the European Commission
- **Online** submission



IEF 2010, PE

JP Dr. Maria Fyta

Current position:

- Junior Professor, Institute for Computational Physics, University of Stuttgart

Professional Experience :

- 2011-2012: Marie-Curie Fellow, Physics-Department, TU Munich
- 2008-2011: Postdoctoral Fellow, Physics-Department, TU Munich
- 2005-2008: Postdoctoral Fellow, Department of Physics, Harvard University

Training:

- 2005: PhD in Physics, University of Crete, Greece
- 2001: M.Sc. in Condensed Matter Physics, University of Crete, Greece

Awards/Honors et al.:

- 2009: Postdoc Fellowship (Excellence Initiative TU Munich)
- 2008: Alexander von Humboldt Research Fellowship for Postdoctoral Researchers

Publications in:

- The Journal of Chemical Physics, Physical Review Letters, Applied Physics Letters

IEF 2008, LS

Dr. Susanne Schmidt



Professional Experience :

- 2009-2011: Marie Curie Fellow, Centre for Systems Biology, University of Birmingham, UK
- 2006-2009: Postdoc, Helmholtz Zentrum Munich, Neuherberg
- 2005-2006: Researcher, Federal Institute for Hydrology, Koblenz
- 2004-2005: Researcher, Federal Natural Historical Collections, Dresden

Training:

- 2000-2005: PhD in Biology, University Koblenz-Landau; field & laboratory work, Division for Land & Water, CSIRO, Floreat, Australia
- 1996-2000: Diploma in Biology, TU Dresden

Awards/Honors et al.:

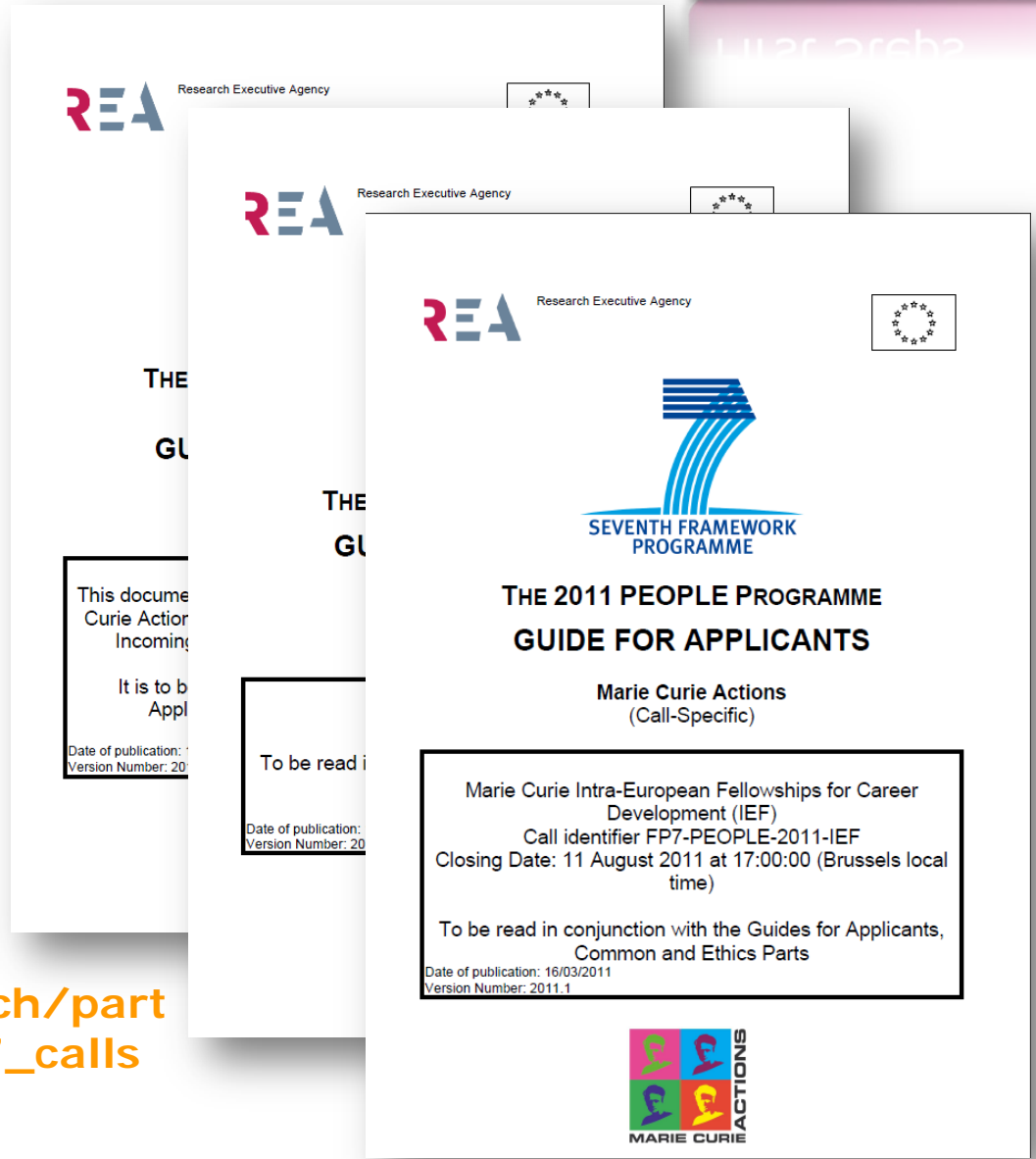
- grants from the Ulrich-Neumann and FAZIT foundations

Publications in:

- FEMS Microbial Ecology, Hydrobiologia, Aquatic Ecology, Limnologica

Reading

- Work Programme
- Call Fiche
- Guide for Applicants
 - Common Part
 - Ethics
 - Call-specific



http://ec.europa.eu/research/participants/portal/page/fp7_calls

European Commission
Participant Portal

European Commission > Research & Innovation > Participant Portal > Funding > FP7 Calls

LOGIN

Login

[Register your account](#)

FP7 SPECIFIC PROGRAMMES

Cooperation

Ideas

People

Capacities

Euratom

NEED HELP?

- [Frequently Asked Questions \(NEW\) Electronic-only submission of Forms C \(Quick info\) Experts area \(Quick info\)](#)
- [User manual \(NEW\) Electronic proposal submission user manual](#)
- [Presentations \(NEW\) Submission of](#)

Home
Funding
Documents
My Organisations
Experts
Support

Latest Info
FP7 Calls
OIP Calls
Other Calls
Search Calls

SELECTED SPECIFIC PROGRAMME: PEOPLE

Open
Closed
Forthcoming

- [Marie-Curie Actions](#) / 4 open calls

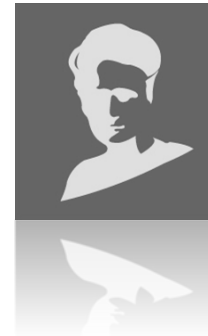
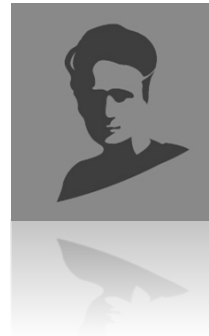
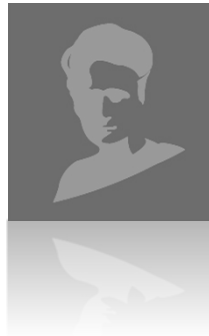
Marie-Curie Actions ([back to top](#))

Call for proposals

Show entries
Copy
Excel
Print

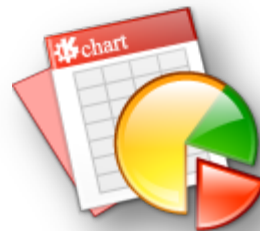
Call Identifier	Call Title	Publication Date
FP7-PEOPLE-2013-IEF	MARIE CURIE INTRA-EUROPEAN FELLOWSHIPS FOR CAREER DEVELOPMENT (IEF)	2013-03-14
FP7-PEOPLE-2013-IIF	MARIE CURIE INTERNATIONAL INCOMING FELLOWSHIPS (IIF)	2013-03-14
FP7-PEOPLE-2013-IOF	MARIE CURIE INTERNATIONAL OUTGOING FELLOWSHIPS FOR CAREER DEVELOPMENT	2013-03-14

Proposal Writing – IEF



Writing hints

- Readability & structure (Template)
- Page number
- Font size, line spacing
- Visual highlights and illustrations (graphics, tables e.g. for Workplan)
- English language
- No colours



Evaluator's perspective:



Proposal in detail

Max. 27 pages

B1

**Research and
Techn. Quality
(max. 8 pages)**

B2

**Training
(max. 2 pages)**

B3

**Researcher
(max. 7 pages)**

B4

**Implementation
(max. 6 pages)**

B5

**Impact
(max. 4 pages)**

B6

**Ethical Issues
(table)**

Writing hints

- Be persuasive and innovative
- Try to see your proposal from an evaluator's point of view
- Scientific vocabulary \Leftrightarrow general comprehensibility
 - Try to also convince non-experts in your field of research
- Use selected Marie Curie terminology (\Rightarrow evaluation criteria)

R&T Quality (25%)

- Give a short **overview** of your project already at the beginning
- Divide the project into integral parts (**work packages**) and explain how they are connected
- What are the **innovative elements** of your project (e.g. new methods)?
- Why must it be done now (State-of-the-art, **timeliness/relevance**)?
- Why is the host the ideal project **environment**?

Example

Most **State-of-the-art** frequently feature in philosophical discussions on freedom of the will. Disorders like schizophrenia, addiction and obsessive-compulsive disorder are apparently considered relevant for arguments about agency and the ability to do otherwise. However, the legitimacy and adequacy of psychiatric elements in philosophical argumentations about free will **have as yet received little systematic or critical attention.**

Gap in this research field

This **Objectives** explores and evaluates the way psychiatric disorders fit into the philosophy of free will. **It addresses the question:** In which way has psychiatry influenced thinking about freedom? The **innovative character** of this proposal lies in its subject and in its **interdisciplinary approach** that integrates expertise from clinical psychiatry in the philos. deb.

Novel aspects

R&T Quality - weaknesses

- **Interdisciplinarity** is not highlighted
- **Problems** are not identified, no contingency plan
- **Methodology**/research focus is not clearly described
- Gaps in the description of the ***state of the art***; most recent results or developments in other countries are not elaborated

R&T Quality - strenghts

- Scientific expertise of the **host institution** is well presented and proved (e.g. through national and especially international contacts and cooperation, publications, patents)
- Quality of the **Scientist in Charge** is well proven (e.g. through internationally recognised expertise, publications in excellent journals, prizes, international contacts/ cooperation)

Training (15%)

- Clearly define training **objectives**:
 - show how they contribute to your career development (⇒career prospects after the project?)
 - define >complementary skills<-training matching your needs!
- Outline your personal **Career Development Plan**
 - training objectives, conferences, presentations/poster, complementary skills, intersectoral secondments
- **Supervision-capacities** of your host institution?

Training - weaknesses

- Insufficient **details** concerning the scientific training
 - no reference to the work plan
 - missing schedule
 - Only general description, no concrete information
- Training plan is too ambitious

Training - strenghts

- Infrastructure/competence/contacts of the **host institution**
- **Supervision** of students or PhD students
- **Scientific presentation** (especially on a international level; presentation and rhetoric skills training)
- **Management training** (e.g. project planning, working with industry, dissemination of research results)
- **Proposal writing** for future funding

Researcher (25%)

- *researchers with a more senior profile*
- Describe your **research experience** (scientific CV, e.g. scientific skills, teaching, conference participations, patents)
- selection of your **publications** (e.g. peer reviewed journals) and conference participations
- Description of the **3 major achievements** (short abstract of your thesis, important publications etc.)
- **career development** opportunities (possibility to acquire new knowledge, potential to reach professional maturity, leadership qualities)

Researcher - weaknesses

- Research **results** are of poor quality (no first authorship, no articles in international peer-reviewed journals)
- Proposal does not elaborate on the **potential** to reach scientific independence / Poor presentation of the fellow's potential
 - Research stays abroad
 - Initiating of collaborations
 - Short stays at excellent research groups/laboratories
 - Organisation of meetings and conferences

Researcher - strenghts

- **Supervision** of (PhD) students
- Coordination / involvement in research **projects**
- **Funding** ID / prizes
- **Teaching** experience

Implementation (15%)

- Description of the **host**: infrastructure and international collaborations (e.g. EU-projects)
- Overview of project **implementation** and **management** at the host institution
- **Work plan** (work packages, deliverables, milestones, risk assessment)
- Show the **host's capacity** for supervision and support: office, lab/equipment, help with local administration, obtaining permits, childcare ...

Implementation - weaknesses

- **Work plan** is too ambitious
- **Timetable** is missing (chart)
- Milestones and foreseen results are not clearly described
- No **risk** assessment
- **Management** capacities are not described (experience of the host's administration of EU-projects)

Implementation - strengths

- Quality of the **infrastructure**: Equipment, workstation
- **Services** for the fellow (e.g. assistance for finding an apartment etc.)
- Quality of the **international network** of the host institution on the basis of concrete examples

Impact (20%)

- Does the project enable you to obtain scientific **independence and maturity**?
 - mid to long-term career development after project?
- Why is the new working **environment** beneficial for your career? (benefit of mobility)
- Contribution of the project to **European excellence** is not explained
- **NEW: Outreach activities** for the dissemination of results (Workshops, Summer School, Public talks, Newspaper articles etc.)

Impact - weaknesses

- Application of **research results** is not discussed
- **Dissemination** of research results
- Contribution of the project to **European excellence** is not explained → competitiveness with Third Countries

European Dimension

- Green/White paper
- Directives
- Communications
- Discussion papers

<http://ec.europa.eu/research/>

The screenshot shows the European Commission Research & Innovation website. The 'Objectives' section is highlighted with a red circle. The page layout includes a header with the European Commission logo and the title 'RESEARCH & INNOVATION'. Below the header is a navigation bar with tabs for Home, Funding & Careers, Objectives, News & Information, Projects & Success Stories, Events, and Research Areas. The 'Objectives' section is circled in red and contains the following text:

- Why European research**
- Horizon 2020** - EU research funding from 2014
- FP7** - EU research funding programme - 2007-2013
- Innovation Union** - Europe's innovation strategy

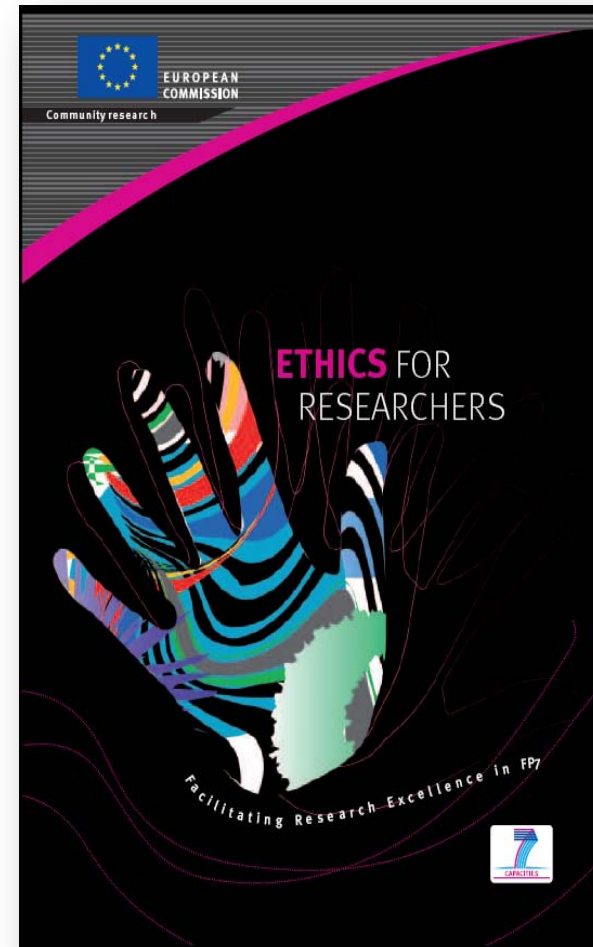
Other sections visible on the page include 'Funding & Careers' with links like 'How to get funding', 'Apply for funding - calls', 'Guidelines & documents', and 'Find project partners'. The 'News & Information' section features a 'Today's 'headline' article' about micro-products and 'All the 'headline' articles'. The 'Projects & Success Stories' section includes 'Uniting European and Russian expertise in shared nanotechnology research'. The 'Events' section lists 'The 1st International conference on Internet Science' and 'Icon Conference 2013: Positive Futures in an Uncertain World'.

Impact - strengths

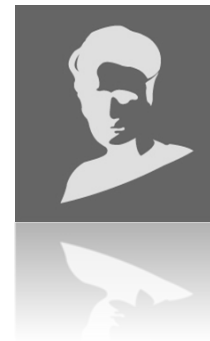
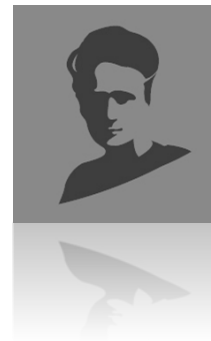
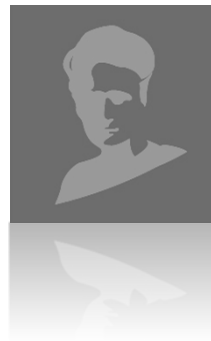
- Applicability of the trainings/experiences for the **future career**
- Build-up and extension of long-term **collaborations** and/or **networks**

Ethical Issues

- children and others unable to consent
- Research with animals
- use of personal data
- etc.



Project Planning



Choice of host institution / supervisor

- Collaborations / network of the host institution
- Research infrastructures
- Internationalisation
- Training possibilities / supervision

Project Planning

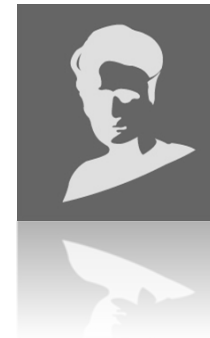
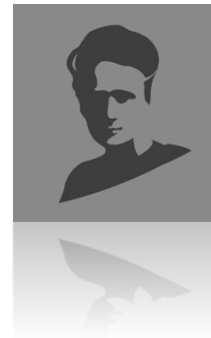
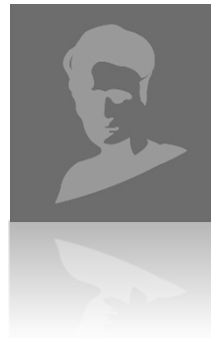
- Updates of documents within current call
- Realistic timetable
 - writing the proposal
 - Consultation with host
- Instructions of „Guide for Applicants“
- Early upload of the proposal

For problems contact the Submission Service Help Desk:

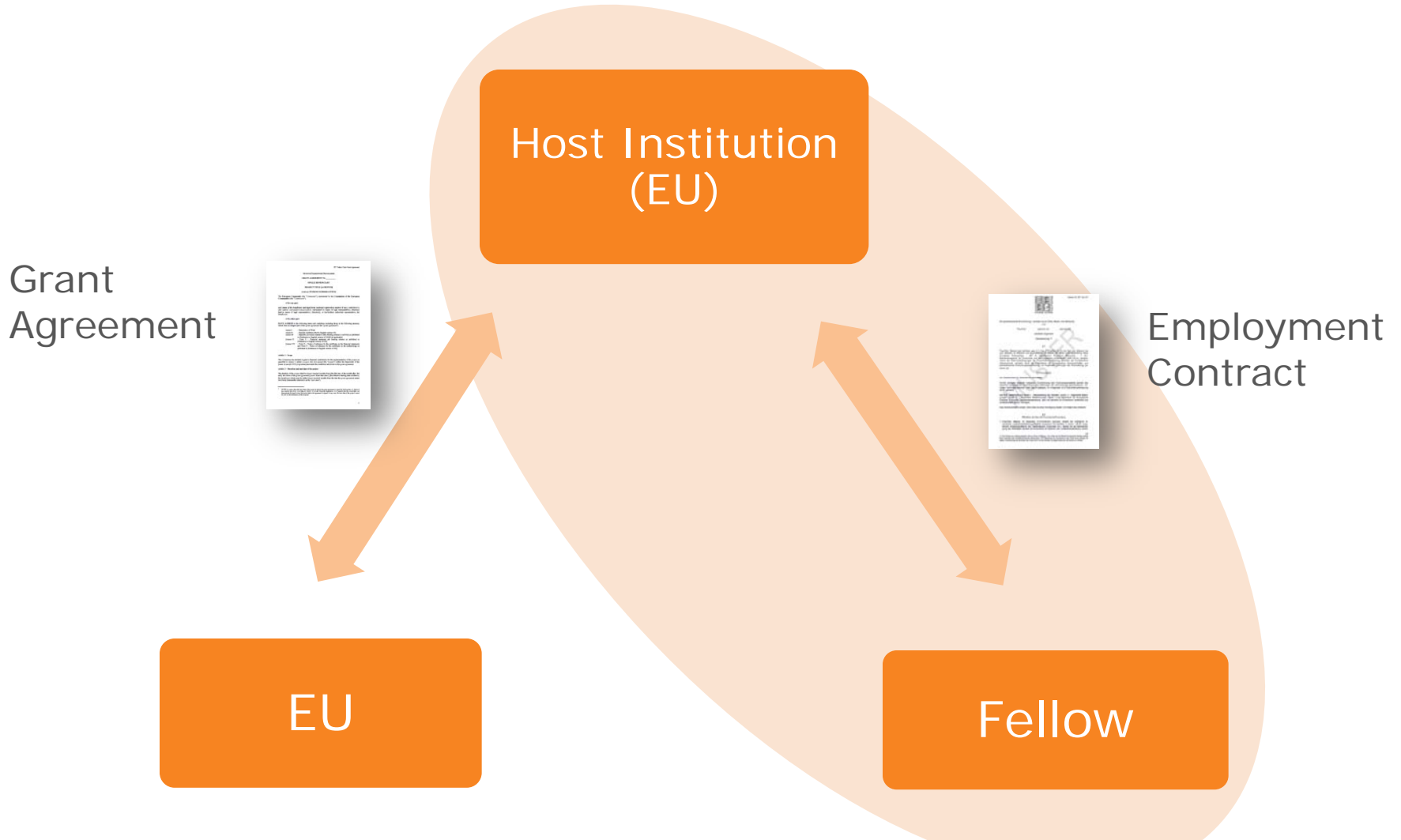
DIGIT-EFP7-SEP-SUPPORT@ec.europa.eu

- **Strict** deadline (14 August 2013, **5 pm** Brussels time)

How to organise your stay abroad




Contracts within Marie Curie



Employment Contract

- Employment contract
- Use template employment contracts for Marie Curie-Fellows
- Net salary
- Taxes
- Social security



Europäischer Rat
Euref/MC-DF-Ma 2009

Die [aufnehmende Einrichtung], vertreten durch [Titel, Name und Adresse],
und
Frau/Herr _____, geboren am _____, (Anschrift)
_____ ,
schließen folgenden
Dienstvertrag ¹⁾

§ 1

Frau/Herr (Name) wird befristet, gem § 2 Abs. 2 WissZeitVG, für die Zeit vom (Datum) bis zum (Datum) im Rahmen und ausschließlich mit Mitteln der Marie Curie-Maßnahme Intra-Europäisches Fellowschips – IEF im spezifischen Programm „Menschenn 7“ EU-Rahmenprogramm für Forschung und technologische Entwicklung (2007-2013), entsprechend den Rahmenbedingungen der Finanzhilfevereinbarung zwischen der Europäischen Gemeinschaft, vertreten durch die Kommission der Europäischen Gemeinschaften, und [aufnehmende Forschungseinrichtung], im Folgenden [Akronym der Einrichtung] genannt, als

EU-Forscherin

am (Gastinstitut) in (Arbeitsort) beschäftigt.

Ihnen obliegen folgende Aufgaben: Durchführung des Forschungsprojektes gemäß des zwischen Europäischer Kommission und [Akronym der Einrichtung] geschlossenen Vertrages (Vertragsnummer, Titel des Projektes), im Folgenden EU-Finanzhilfevereinbarung (ECF) genannt.

Die ECF, bestehend aus Annex I – Beschreibung der Arbeiten, Annex II – Allgemeine Bedingungen, Annex III – Besondere Bestimmungen (Marie Curie-Stipendium für europäische Forscher in Europa, Laufbahntwicklung), wird mit der/dem EU-Forscherin vereinbart und ist Bestandteil dieses Vertrages.

Das Dienstverhältnis endet, ohne dass es einer Kündigung bedarf, mit Ablauf des (Datum).

§ 2

Pflichten der/des EU-Forscherin/Forschers

1. Frau/Herr (Name), im folgenden EU-Forscherin genannt, erstellt bei Aufnahme ihrer/seiner Laufbahntwicklungstätigkeit zusammen mit der/dem in Annex I (EUF) angeführten Wissenschaftler/in der Gastinstitution (Frau/Herr Dr.), die/der für die Beauftragung der Aktivitäten der/des EU-Forscherin im Rahmen der Laufbahntwicklung verantwortlich ist.

14

(1) Die Sitzung des Vertragspartners wird mit dem Vertrag. Von Seiten der des Euratom einstellendes Personal welches einen Unfallschaden oder Verantwortlichkeiten überträgt. Die Verantwortung der Organisation oder Teile davon schließt auf eigenes Verantwortung auf sich. Die Haftung der Organisation ist durch die Haftung der Organisation auf sich zu schließen.

Further important aspects

- Financial provision for your family
- Visas and residence permit
- Practical questions
 - Accommodation
 - child care, school
 - language courses...

Support

- EURAXESS



- Marie Curie Fellows Association

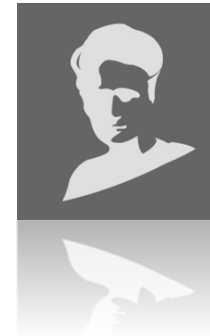
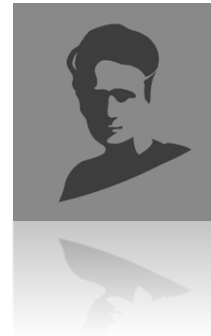
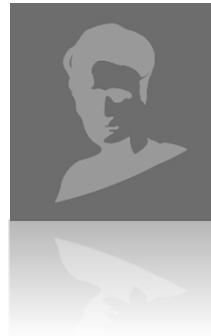


- Contact person at the host institution
(Welcome office, EU office)
- EU Website "Help and advice on your life, work and travel in the EU"



http://ec.europa.eu/youreurope/citizens/index_en.htm

Further Career Planning



General Considerations

- At what step of my career am I now?
- Where do I want to go from here?
Define your scientific and professional goals
- Consider the time management:
Start planning in the second half of your MC-fellowship

Your options after the MC-Fellowship

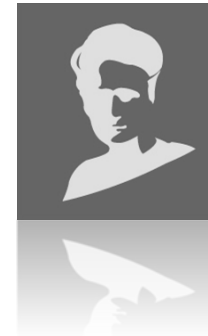
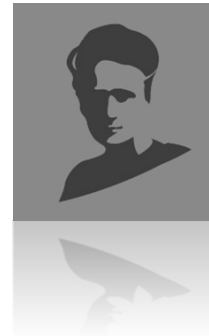
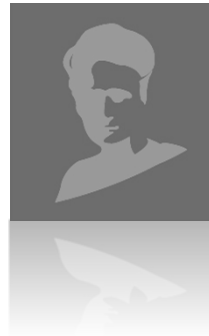
<p>(Re)Integration</p>	
<p>Further Postdoc stay abroad</p>	
<p>Position at a research institute</p>	
<p>Own Position</p>	
<p>Own Research Group</p>	

Information

- „Research in Europe“-events
 - Overview on current funding possibilities for PhD students and postdocs
 - Get in touch with speakers from different funding and research institutions
 - 23 July 2013, University of Bielefeld
<http://www.kowi.de/fie-bielefeld>
 - Next February: Bremen



EURAXESS





Jobs

- Job Vacancies
- Fellowships programmes
- National EURAXESS portals
- News and Events
- Research policies
- Useful links

Services

- Search for services
- EURAXESS Services Centres
- Scientific visa package
- Brochures

Rights

- The Charter for Researchers
- The Code of Conduct 4 their Recruitment
- The Human Resources Strategy (HRS4R)
- Social Security & Pension
- Entry conditions

Links

- About EURAXESS Links
- European R&D policies
- European R&D Framework Programme
- Destination World



European Commission EURAXESS

mission > EURAXESS > Jobs



Home

Jobs

Services

Rights

Links

How to Publish
Job Vacancies
in 4 steps

Job vacancies Fellowship Programmes

1841 Jobs available!

By Free Text Search

Search

By directory

Country	Research field
Organisation	Marie Curie vacancies
Career Stage	Research Profile

Latest Jobs

17/10/2011
PhD student Biomedical Sciences
17:19 | NETHERLANDS - AcademicTransfer

News and Events

HAVE A SAY!

The European Commission would like to **improve the services and information offered to EU and non-EU researchers in Europe**. To this end, please spend 10 minutes answering few questions available [here](#)



My EURAXESS

Publish your job vacancies & fellowship programmes or Post your CV

Existing User

User Account

Password

[Forgot your password?](#)

Login

New User?

find your
National EURAXESS
Portal

EURAXESS WIDGETS

Add Job Vacancies Search to your web pages





- Home >
- Jobs** >
- Services >
- Rights >
- Links >

How to Publish Job Vacancies in 4 steps >

Job vacancies Fellowship Programmes



By Free Text Search

Search



Search Results

106 results found (1-15 Displayed)

View the results as:

First « Previous 1 2 3 4 5 6 7 8 Next » Last

Experienced research fellow

One Experienced Researcher (post-doc) position is available from Dec 1st, 2011, at the KTH School of Electrical Engineering, Stockholm, Sweden as part of the AUDIS project. The start date is [...]
28/10/2011 - 17:00 | **Country:** Germany | **Organisation:** Institute of Communication Acoustics | **Research field:** Engineering

Early stage research fellow

Two research training positions are available at the Institute of Sound and Vibration Research (ISVR) at the University of Southampton as part of the AUDIS project. They will give first-hand [...]
28/10/2011 - 16:52 | **Country:** Germany | **Organisation:** Institute of Communication Acoustics | **Research field:** Engineering

Marie Curie Early Stage Researcher: Research Position in Computer Science (Knowledge Management for Medical Applications)

An appointment as an Early Stage Researcher (ESR) is available at CNR-Italian National Research Council, IMATI-Institute of Applied Mathematics and Information Technologies, Genova, Italy, within the framework of the European [...]
28/10/2011 - 11:42 | **Country:** Italy | **Organisation:** CNR-IMATI | **Research field:** Information science

Refine By

Research field

- Agricultural sciences (2)
- Anthropology (1)
- Architecture (1)
- Arts (1)
- Astronomy (1)

More +

Country

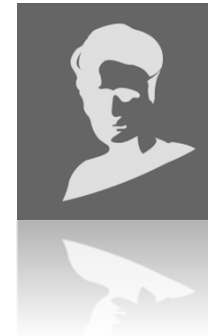
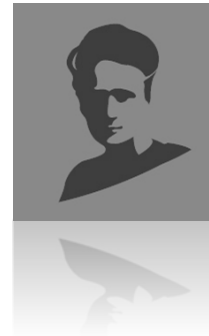
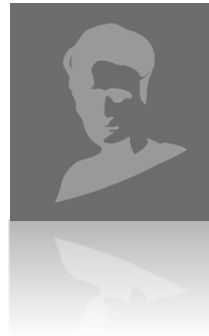
- Austria (4)
- Belgium (15)
- Czech Republic (2)
- Denmark (2)
- France (8)

More +

Publishing Organisation

- Asociación Centro de Investigación Cooperativa en Biociencias - CIC bioGUNE (1)
- AVL List GmbH (1)
- Ben-Gurion University of the Negev (1)
- BioProcess Engineering Gro

Further information & contacts



Information online (I)

- Mobility Portal
<http://ec.europa.eu/euraxess>
- Model employment contract for MC-Fellows in Germany
<http://www.kowi.de/mc-vertrag>
- Marie Curie at KoWi:
<http://www.kowi.de/nachwuchs>



Information online (II)

- <http://cordis.europa.eu/fp7>
- <http://ec.europa.eu/research/participants/portal/page/people>
- <http://ec.europa.eu/research/mariecurieactions>
- <http://www.humboldt-foundation.de/de/programme/mariecurie>
- <http://www.kowi.de/nachwuchs>
- KoWi newsletter: <http://www.kowi.de/aid>



KoWi services for Marie Curie

- Review of complete proposals
- Website for the Marie Curie Actions
- Newsletter („Aktiver Informationsdienst“, AiD)
- Information events as well as proposal writing workshops at German universities and research institutions
- Information on Marie Curie financial and project management

Contacts at KoWi

Bonn

Patricia Hoff

+49-228-95997-16

ph@kowi.de

Ulrike Kreger

+49-228-95997-13

uk@kowi.de

Vera Küpper

+49-228-95997-14

vk@kowi.de

Sarah Raphael

+49-228-95997-15

sr@kowi.de

Dr. Sonja

Ochsenfeld-Repp

+49-228-95997-10

sor@kowi.de

www.kowi.de

Brussels

Anita Bindhammer

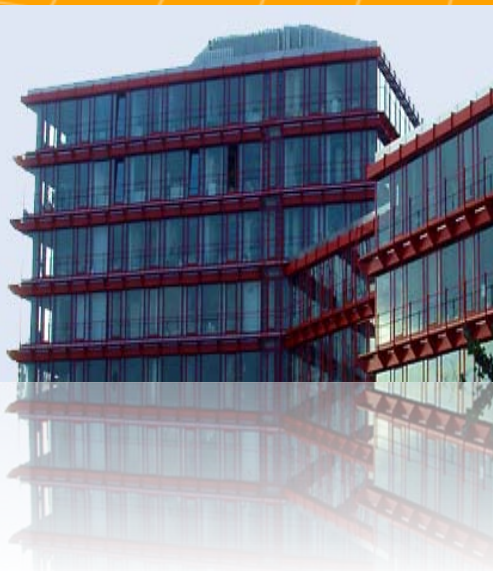
+32-2-54802-12

ab@kowi.de

Victoria Llobet

+32-2-54802-20

vl@kowi.de



EU Liaison Office of the German Research Organisations

Bonn: Wissenschaftszentrum Bonn
Ahrstr. 45
D - 53175 Bonn

Brussels: Rue du Trône/Troonstraat 98
B - 1050 Bruxelles

Contact

Vera Küpper

email: vk@kowi.de

phone: +49-(0)228-95997-14